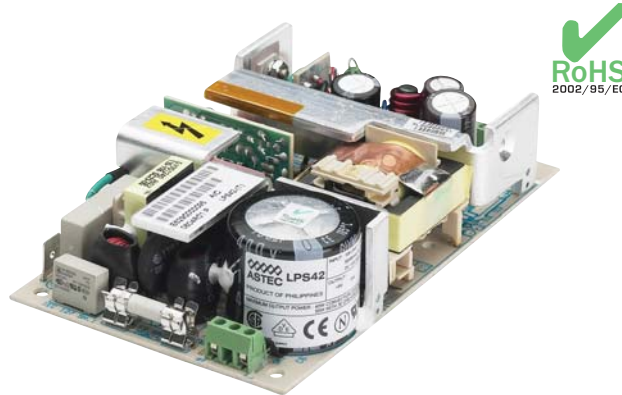


# NTQ123-DC Series

70 - 125 Watts

**Total Power:** 70-120 Watts  
**Input Voltage:** 36 - 72 VAC  
**# of Outputs:** Quad



## Special Features

- -48 VDC input
- Remote sense on outputs one and two
- Power fail and remote inhibit
- Single wire current sharing on outputs one and two
- Adjustable main outputs
- Built-in Class B EMI filter
- Overvoltage protection
- Overload protection
- Thermal overload protection

## Safety

**VDE** 0805/EN60950 (IEC950)  
**UL** UL1950  
**CSA** CSA 22.2-234 Level 3  
**NEMKO** EN 60950/EMKO-TUE (74-sec) 203  
**CB** Certificate and report  
**CE** Mark (LVD)

## Electrical Specifications

### Input

Input range	36 - 72 VDC
Inrush current	38 A max., cold start @ 25°C
Efficiency	65% typical at full load
EMI filter	FCC Class B conducted; CISPR 22 Class B conducted; EN55022 Class B conducted; VDE 0878 PT3 class B conducted and radiated.
Safety ground leakage current	<1 mA @ 72 Vdc input

### Output

Maximum power	70 W for convection; 125 W with 30 CFM forced air
Adjustment range	±5% minimum
Hold-up time	20ms @ 120 W load, -48 Vdc input
Overload protection	Short circuit protection on all outputs Case overload protected @ 110-145% above peak rating
Overvoltage protection	3.3 V output; 5 V output: 10% to 35% above nominal output

### Logic Control

Power failure	TTL logic signal goes high 100-500 msec after 5 V output; it goes low at least 4 msec before loss of regulation
Remote inhibit	Requires an external TTL Signal to inhibit outputs
Remote sense	Compensates for 0.5 V lead drop minimum, will operate without remote sense connected. Reverse connection protection.



## Environmental Specifications

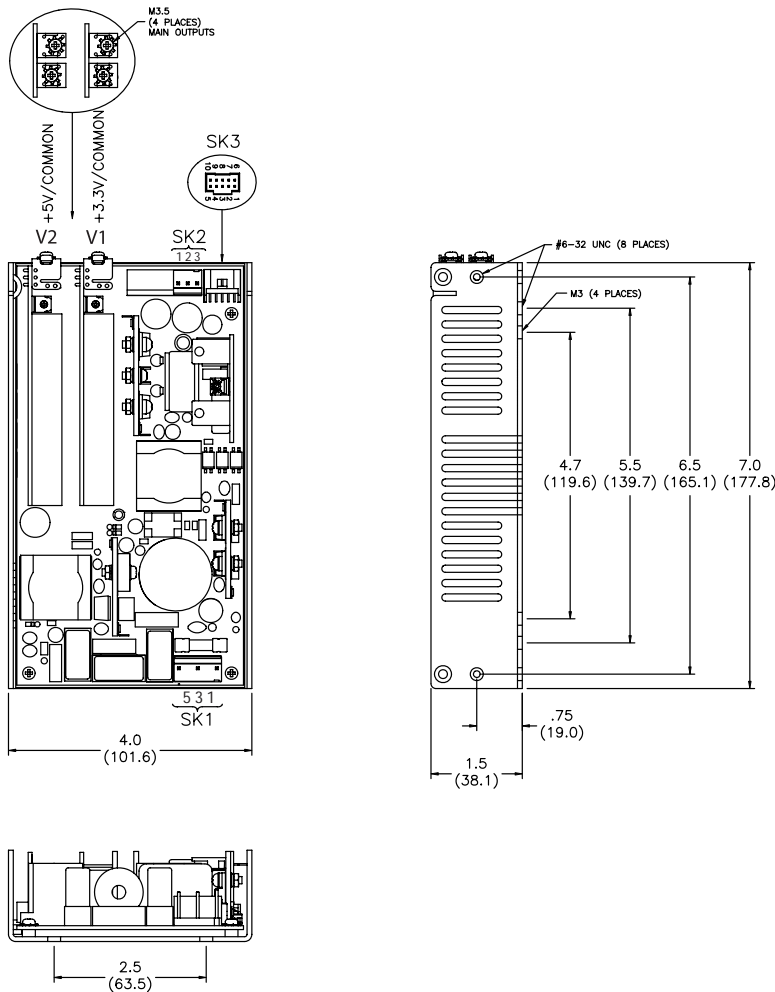
Operating temperature:	0° to 50°C ambient. Derate each output 2.5% per degree from 50° to 70°C
Storage temperature:	-40°C to +85°C
Temperature coefficient:	±0.4% per °C
Electromagnetic susceptibility:	Designed to meet EN61000-4, -2, -3, -4, -5, -6, -8, -11 Level 3
Humidity:	Operating; non-condensing 5% to 95% RH
Vibration:	Three orthogonal axes, sweep at 1 oct/min, 5 min. dwell at four major resonances 0.7 G peak 5 Hz to 500 Hz, operational
MTBF demonstrated:	>1 million hours at full load and 25°C ambient conditions

## Ordering Information

Model Number	Output Voltage	Minimum Load	Maximum Load with Convection Cooling	Maximum Load with 30CFM forced Air	Peak Load <sup>1</sup>	Regulation <sup>2</sup>	Ripple P/P (PARD) <sup>3</sup>
NTQ123-DC	+3.3 V (2.5 - 5.7)	2 A	14 A	25 A	28 A	±2%	50 mV
	+5 V (2.5 - 5.7)	0 A	12.5 A	24 A	28 A	±2%	50 mV
	+12 V	0 A	1 A	2 A	4 A	±3%	120 mV
	-12 V	0 A	0.5 A	1 A	1.5 A	±3%	120mV

1. Peak current lasting <30 seconds with a maximum 10% duty cycle.
2. At 25°C including initial tolerance, line voltage, load currents and output voltages adjusted to factory settings.
3. Peak-to-peak with 20 MHz bandwidth and 10 µF in parallel with a 0.1 µF capacitor at rated line voltage and load ranges.
4. Minimum loads are required. In parallel minimum loads are 2 A on the 5 V output and 2 A on the 3.3 V output for each power supply

## Mechanical Drawing



### Pin Assignments

<b>SK1</b>	PIN 1	Ground
	PIN 3	-48 Vdc
	PIN 5	Return
<b>SK2</b>	PIN 1	+12 V
	PIN 2	Common
	PIN 3	-12 V
<b>SK3</b>	PIN 1	3.3 V SWP
	PIN 2	-3.3 V sense
	PIN 3	+3.3 V +sense
	PIN 4	5 V SWP
	PIN 5	Common
PIN 6	+5 V ssense	
PIN 7	-5 V sense	
PIN 8	+ inhibit	
PIN 9	- inhibit	
PIN 10	Power fail	

### Mating Connectors

**(SK1) DC Input:** Molex: 09-50-8051 (USA)  
Molex: 09-91-0500 (UK)  
PINS: 08-58-0111

**V1 & V2:** Molex BB-124-08

**(SK2) ±12 V** Molex:09-50-8031 (USA)  
Molex: 09-91-0300 (UK)  
PINS: 08-58-0111

**(SK3) Control Signals:** Molex: 90142-0010  
PINS: 90119-2110  
or  
Amp: 87977-3  
PINS: 87309-8

Astec Connector Kit #70-841-012, includes all of the above

1. Specifications subject to change without notice.
2. All dimensions in inches (mm), tolerance is  $\pm 0.02^*$  ( $\pm 0.5$ mm)
3. Remote inhibit requires an external 5 V @ 10 mA to activate
4. Mounting maximum insertion depth is 0.12"
5. Warranty: 2 year
6. 1.49 lb./ 0.68 kg

### Americas

5810 Van Allen Way  
Carlsbad, CA 92008  
USA  
Telephone: +1 760 930 4600  
Facsimile: +1 760 930 0698

### Europe (UK)

Waterfront Business Park  
Merry Hill, Dudley  
West Midlands, DY5 1LX  
United Kingdom  
Telephone: +44 (0) 1384 842 211  
Facsimile: +44 (0) 1384 843 355

### Asia (HK)

16th - 17th Floors, Lu Plaza  
2 Wing Yip Street, Kwun Tong  
Kowloon, Hong Kong  
Telephone: +852 2176 3333  
Facsimile: +852 2176 3888

For global contact, visit:

[www.astecpower.com](http://www.astecpower.com)

[www.artesyn.com](http://www.artesyn.com)

[technicalsupport@astec.com](mailto:technicalsupport@astec.com)

[technicalsupport@artesyn.com](mailto:technicalsupport@artesyn.com)

While every precaution has been taken to ensure accuracy and completeness in this literature, Emerson Network Power assumes no responsibility, and disclaims all liability for damages resulting from use of this information or for any errors or omissions.

### Emerson Network Power.

The global leader in enabling  
business-critical continuity.

- AC Power
- Connectivity
- DC Power
- **Embedded Power**
- Inbound Power
- Integrated Cabinet Solutions
- Outside Plant
- Precision Cooling
- Site Monitoring and Services

**EmersonNetworkPower.com**

Emerson Network Power and the Emerson Network Power logo are trademarks and service marks of Emerson Electric Co.  
©2007 Emerson Electric Co.